

Bungalow Designs



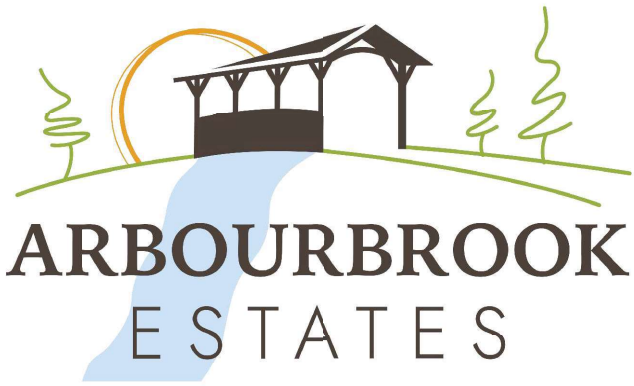
The Capella I



The Polaris



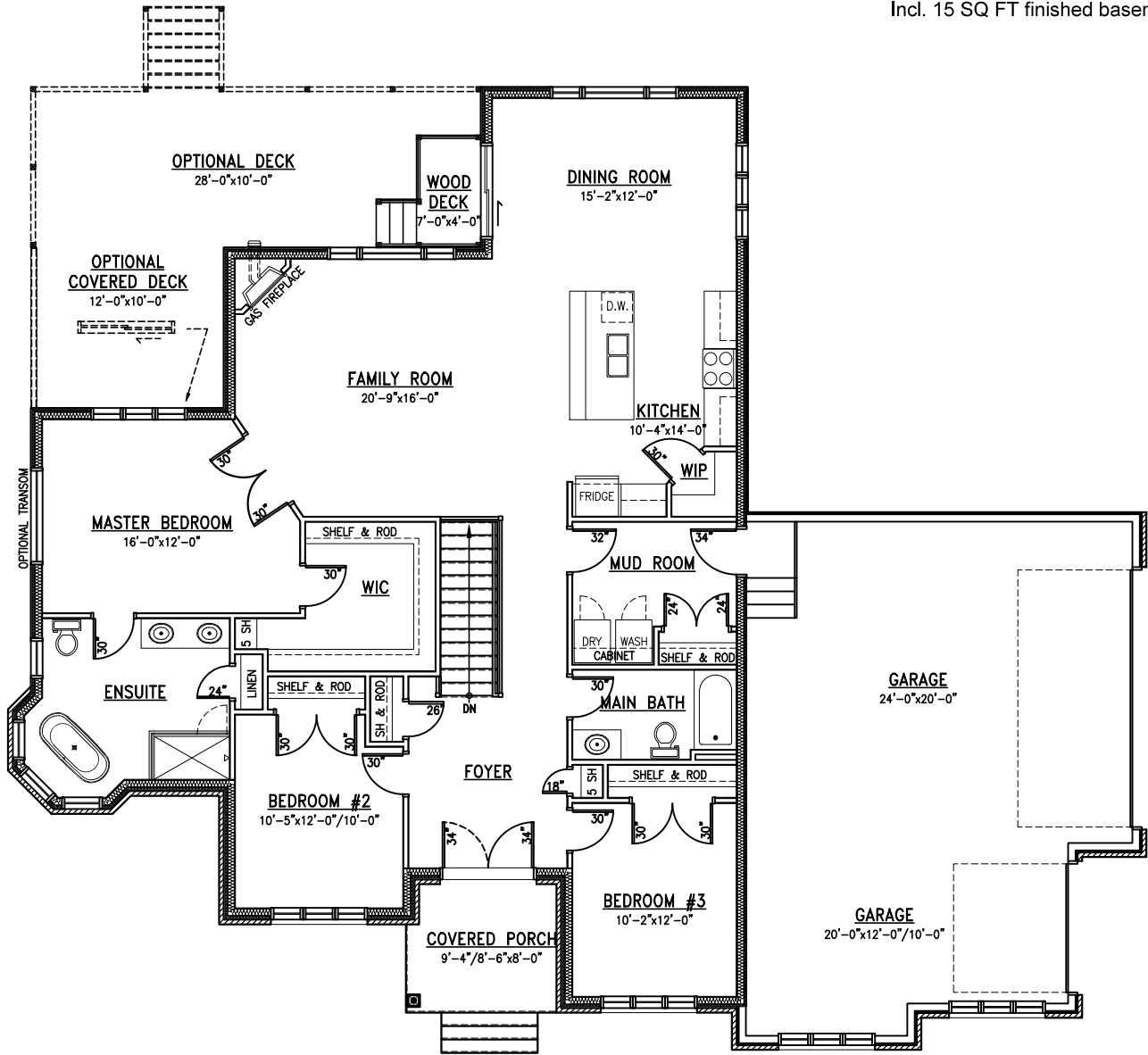
The Vega



ARBOURBROOK ESTATES



The Bellatrix
1,885 SQ FT
Incl. 15 SQ FT finished basement



MainFloor

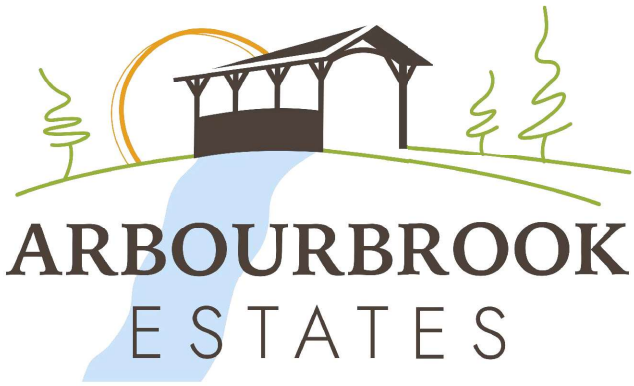
All measurements are approximate.
Actual usable floor space may vary from stated floor area.

Plans and specifications are subject to change without notice. E.&O.E.
Oct 5, 2023

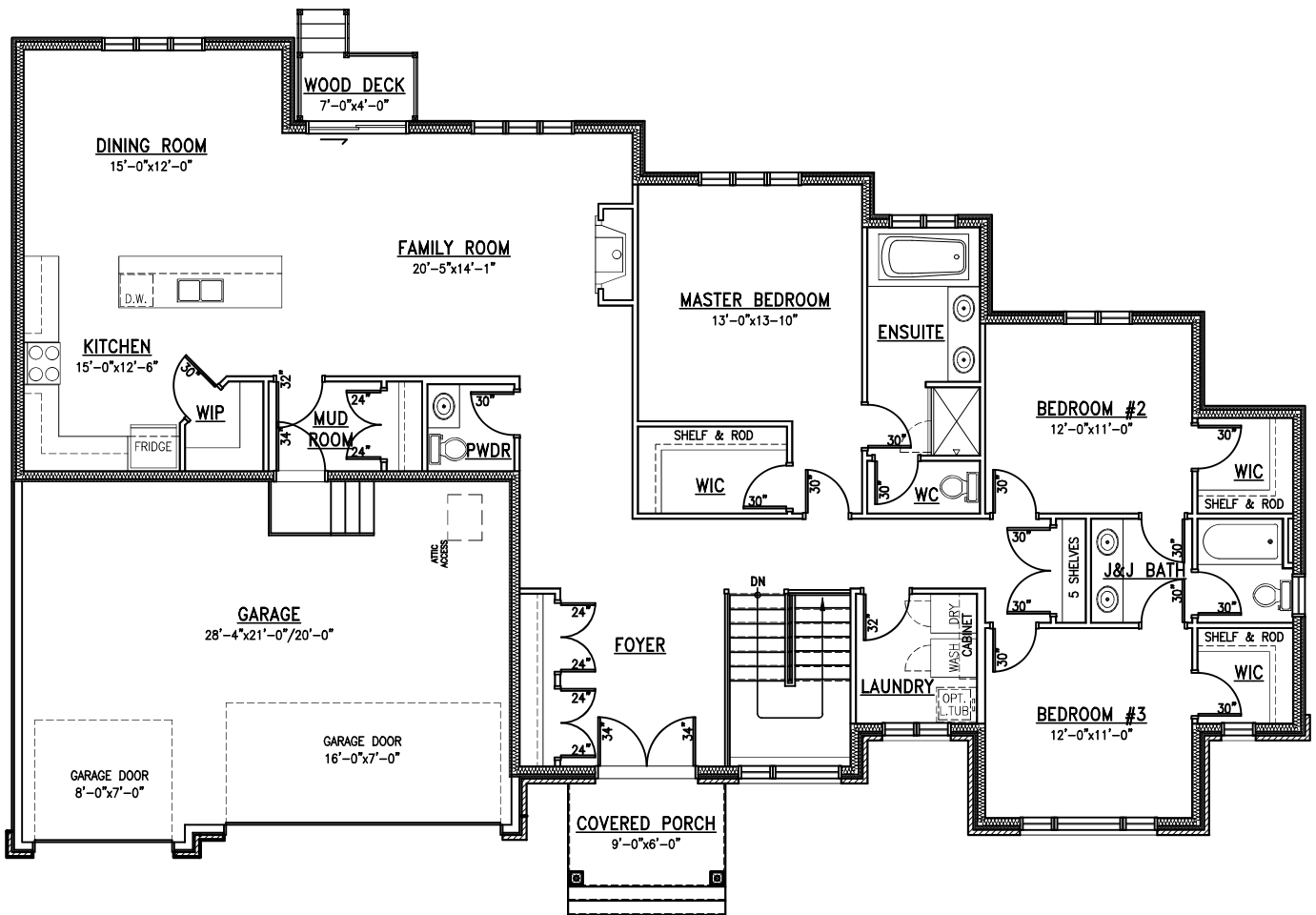
MetricHomes.com



613-296-7000



The Polaris II
2,175 SQ FT
Incl. 20 SQ FT finished basement



MainFloor

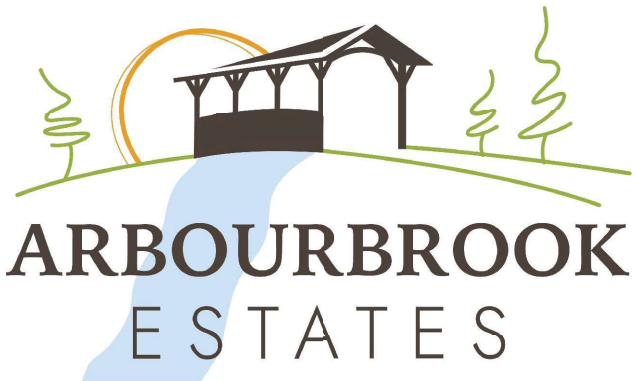
All measurements are approximate.
Actual usable floor space may vary from stated floor area.

Plans and specifications are subject to change without notice. E.&O.E.
December 13, 2024

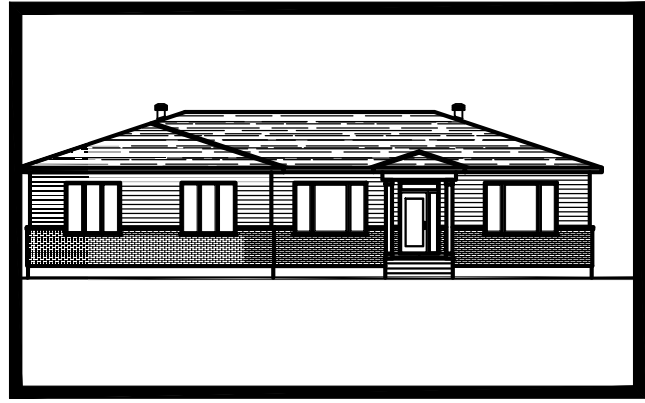
MetricHomes.com



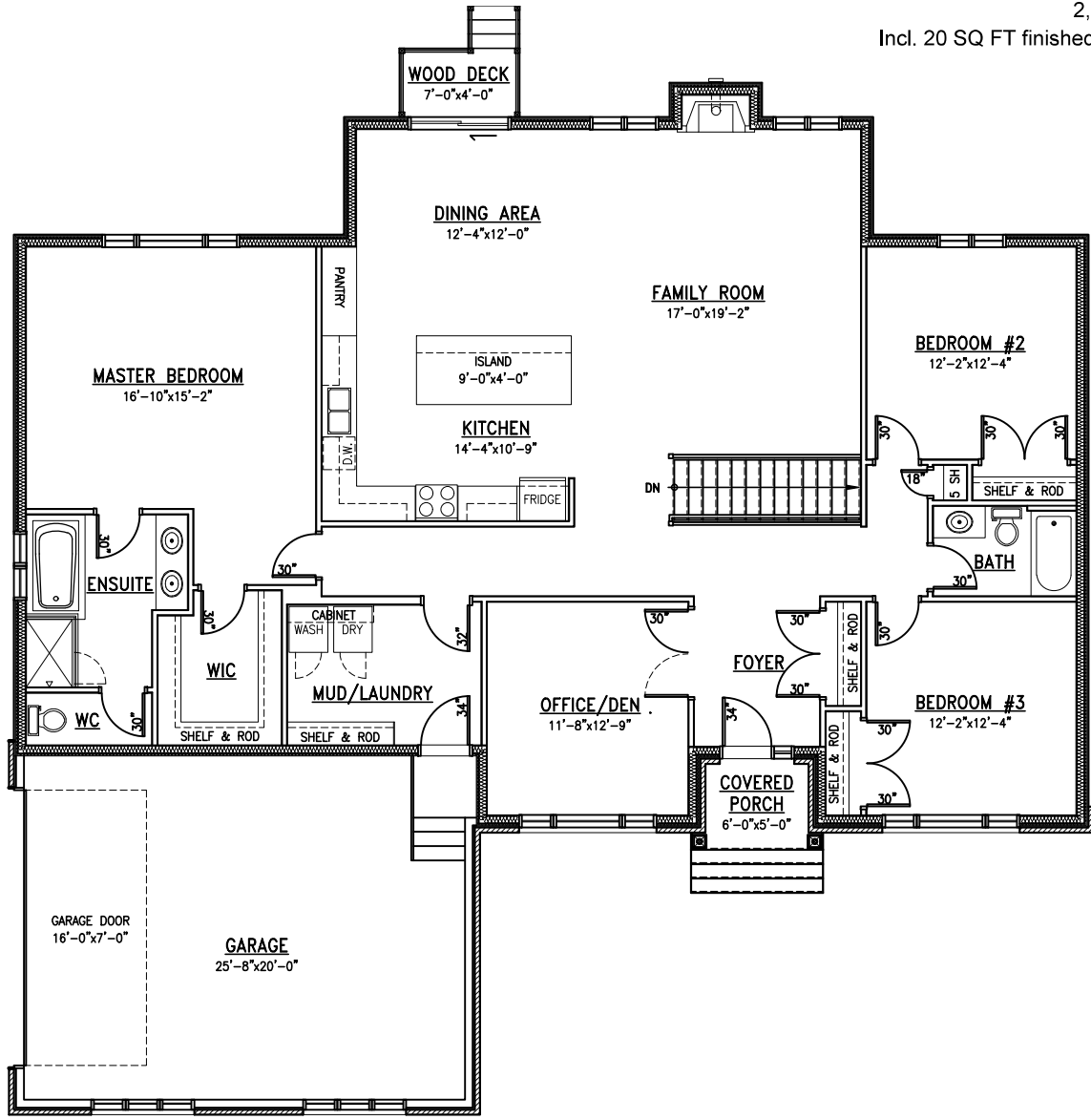
613-296-7000



ARBOURBROOK ESTATES



The Sirius
2,240 SQ FT
Incl. 20 SQ FT finished basement



MainFloor

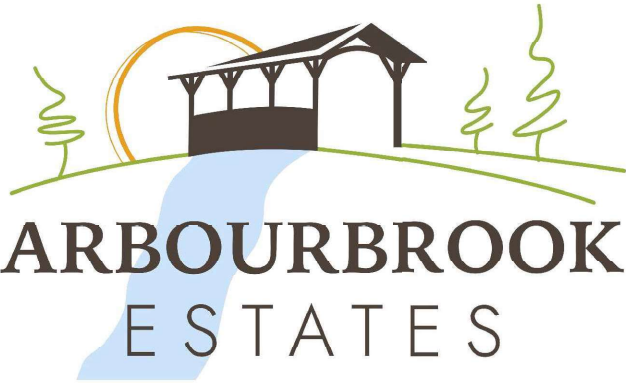
All measurements are approximate.
Actual usable floor space may vary from stated floor area.

Plans and specifications are subject to change without notice. E.&O.E.
Oct 16, 2023

MetricHomes.com



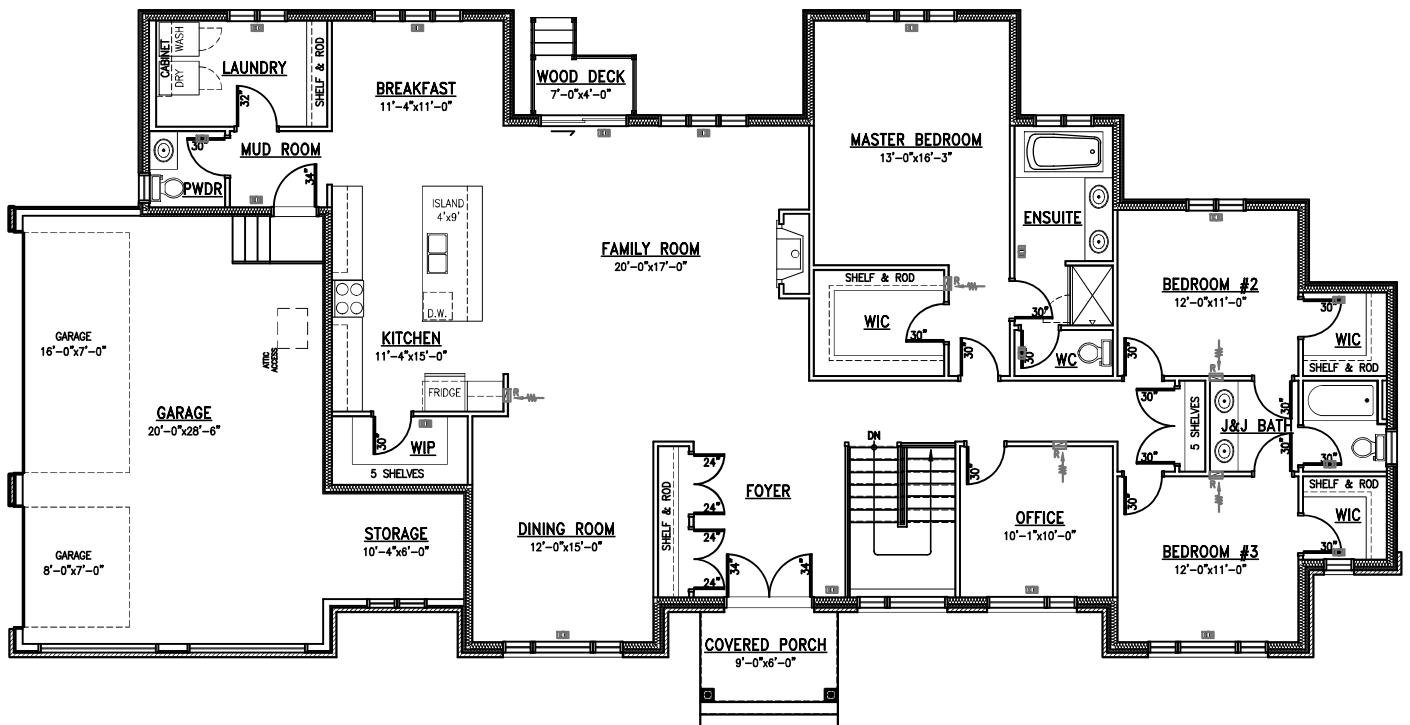
613-296-7000



ARBOURBROOK ESTATES



The Polaris I
2,585 SQ FT
Incl. 20 SQ FT finished basement



MainFloor

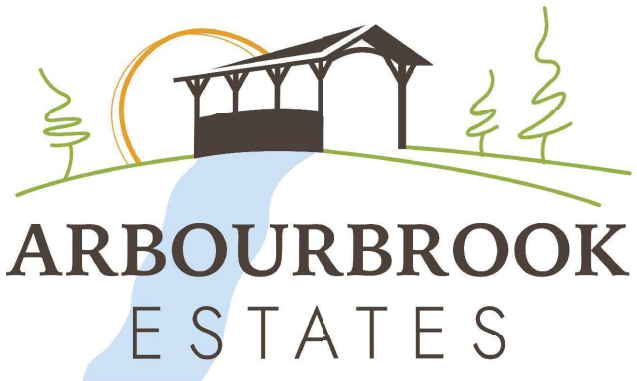
All measurements are approximate.
Actual usable floor space may vary from stated floor area.

Plans and specifications are subject to change without notice. E.&O.E.
December 17, 2024

MetricHomes.com



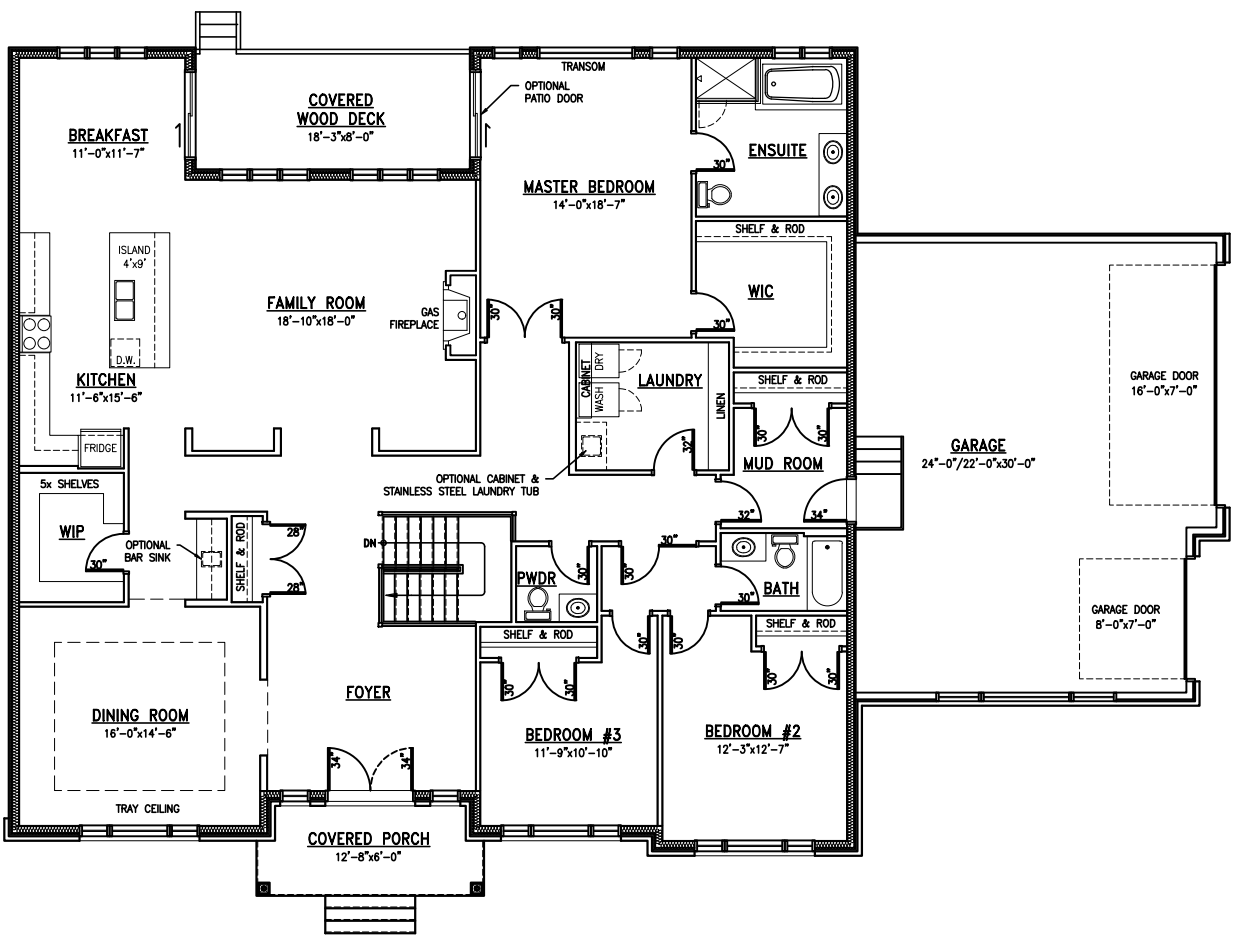
613-296-7000



ARBOURBROOK ESTATES



The Lyra
2,825 SQ FT
Incl. 20 SQ FT Basement Landing



Main Floor

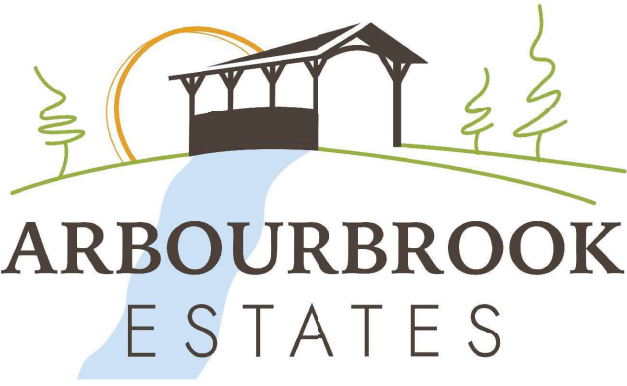
All measurements are approximate.
Actual usable floor space may vary from stated floor area.

Plans and specifications are subject to change without notice. E.&O.E.
October 19, 2023

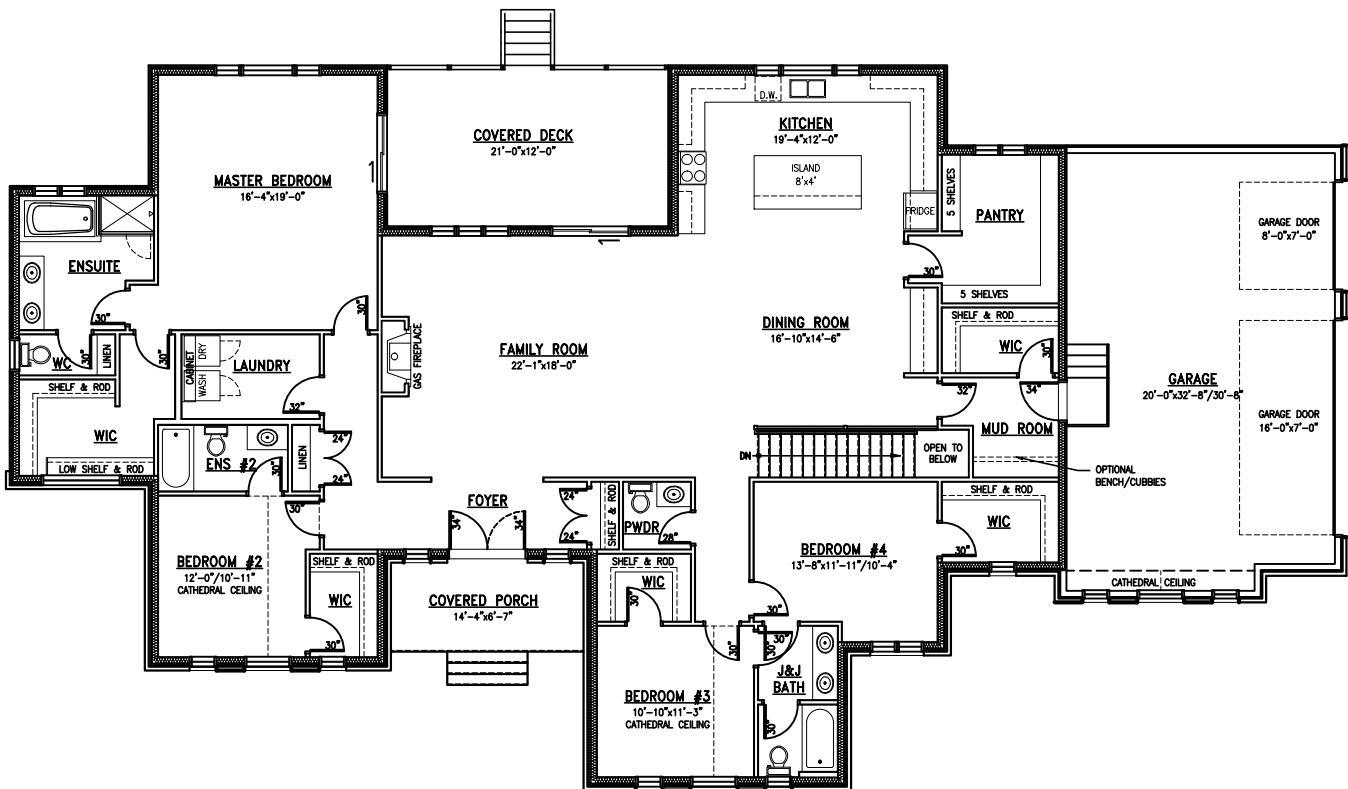
MetricHomes.com



613-296-7000



The Capella I
 3,015 SQ FT
 Incl. 20 SQ FT finished basement



MainFloor

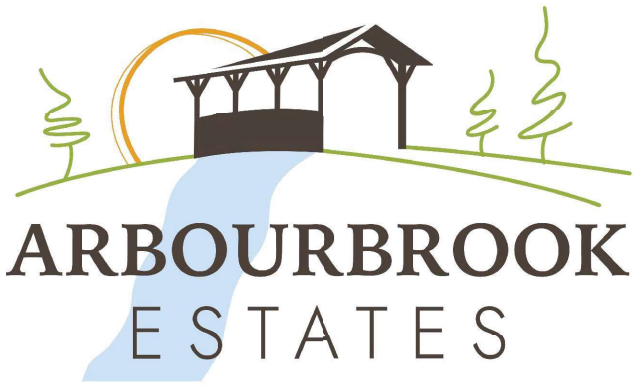
All measurements are approximate.
 Actual usable floor space may vary from stated floor area.

Plans and specifications are subject to change without notice. E.&O.E.
 Oct 18, 2023

MetricHomes.com



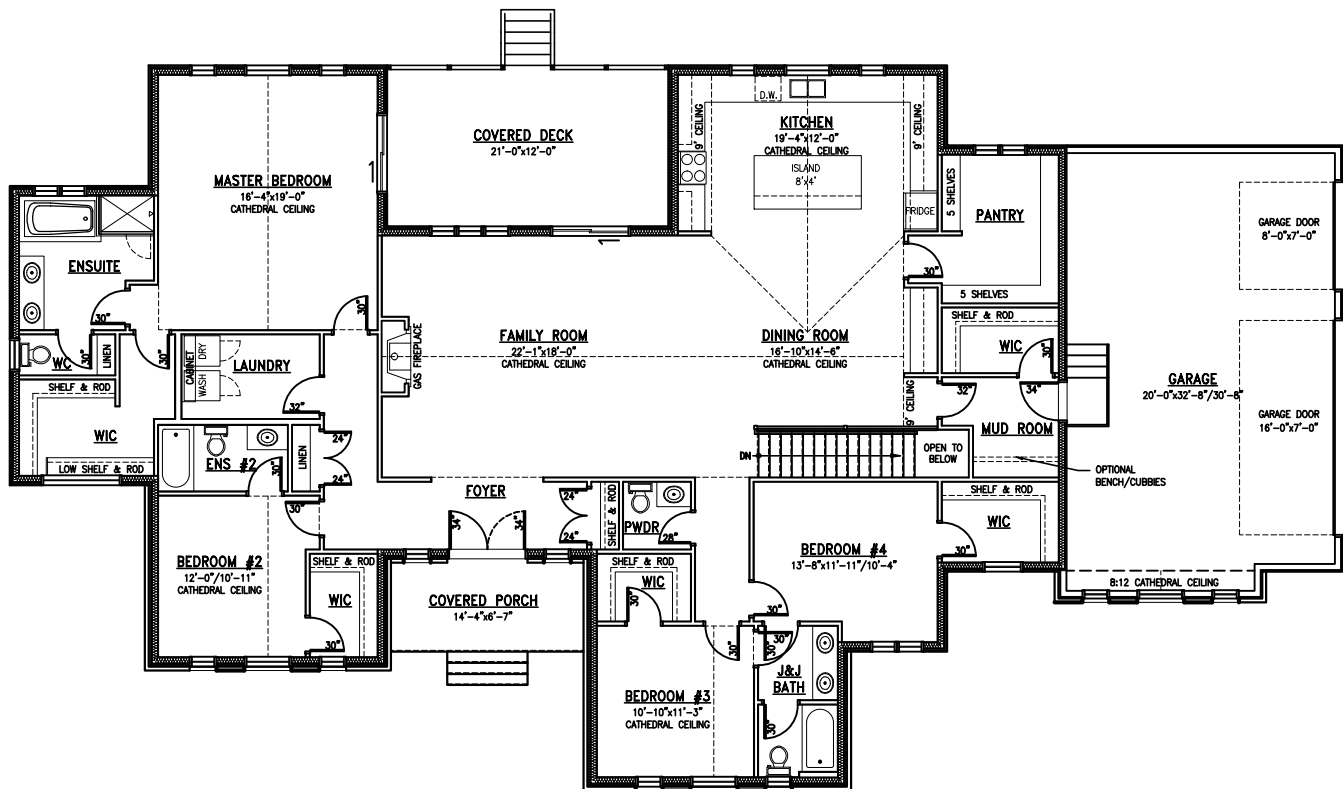
613-296-7000



ARBOURBROOK ESTATES



The Capella II
3,015 SQ FT
Incl. 20 SQ FT finished basement



MainFloor

All measurements are approximate.
Actual usable floor space may vary from stated floor area.

Plans and specifications are subject to change without notice. E.&O.E.
Oct 18, 2023

MetricHomes.com



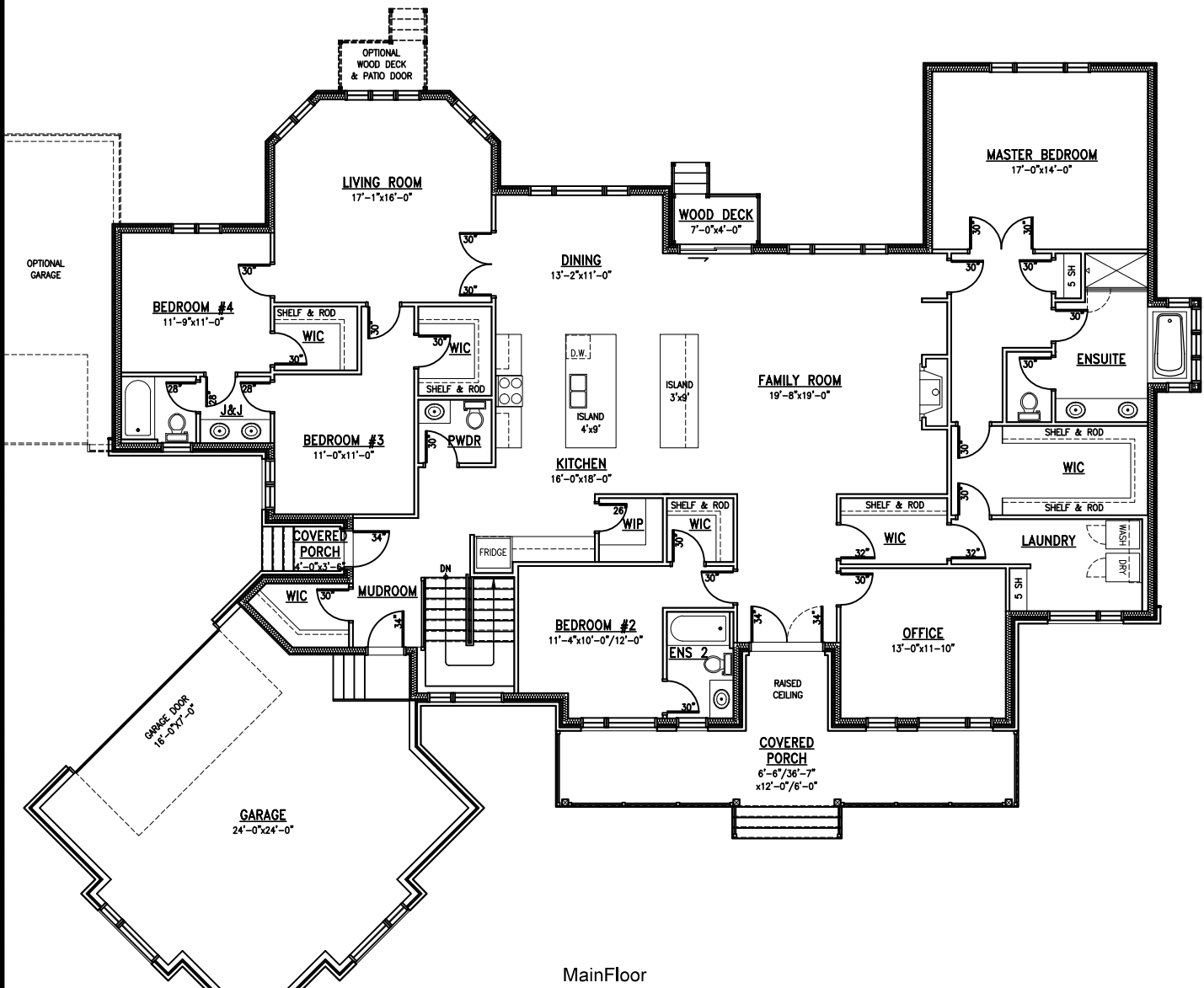
613-296-7000



ARBOURBROOK ESTATES



The Vega
3,250 SQ FT
Incl. 20 SQ FT finished Basement



MainFloor

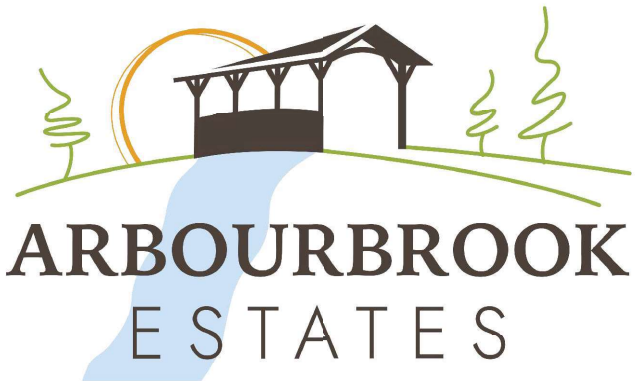
All measurements are approximate.
Actual usable floor space may vary from stated floor area.

Plans and specifications are subject to change without notice. E.&O.E.
Oct 18, 2023

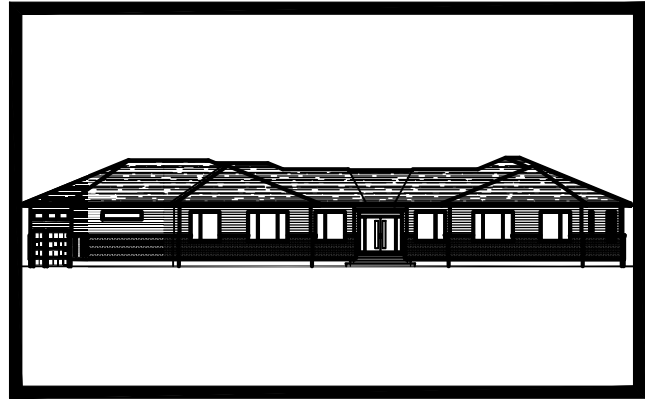
MetricHomes.com



613-296-7000



ARBOURBROOK ESTATES

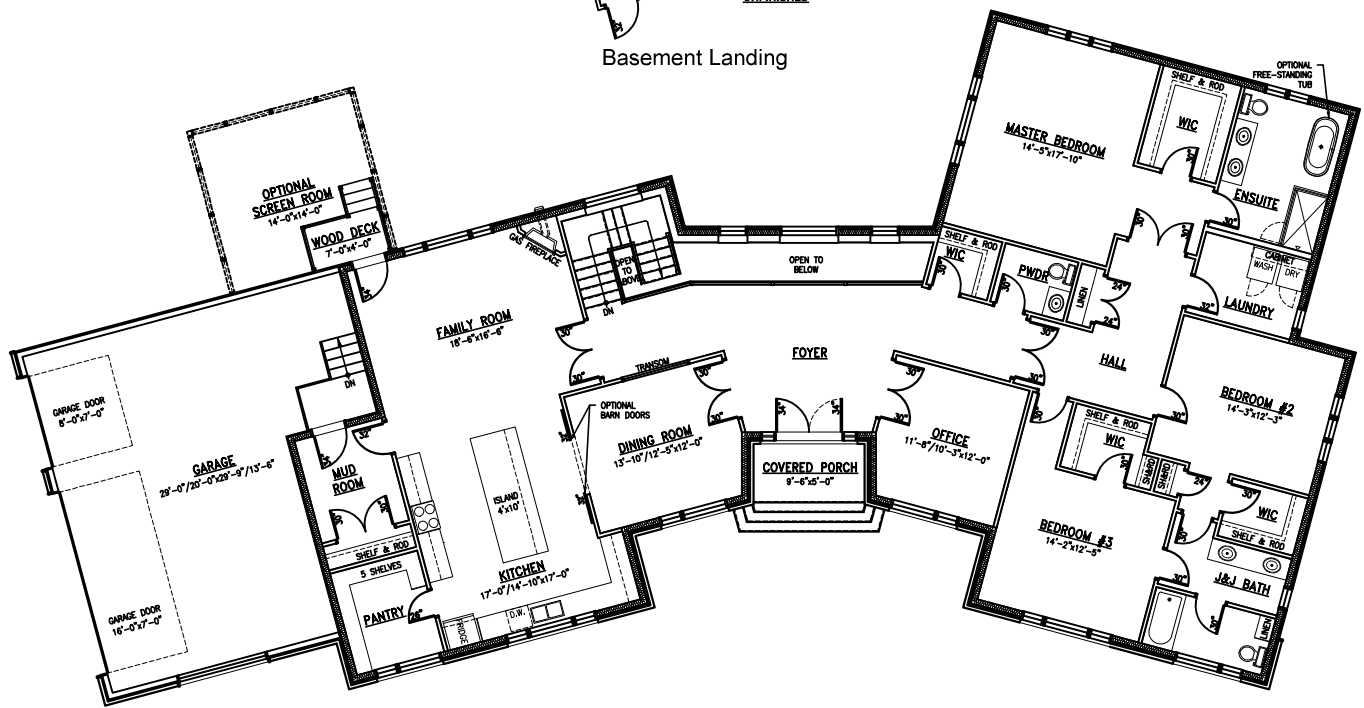
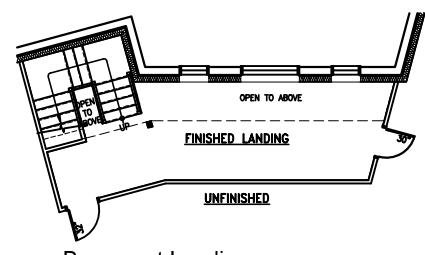


The Denebola

3,380 SQ FT

Incl. 80 SQ FT open to below

Incl. 235 SQ FT finished basement



All measurements are approximate.
Actual usable floor space may vary from stated floor area.

Plans and specifications are subject to change without notice. E.&O.E.
Oct 18, 2023

MetricHomes.com



613-296-7000